

## ***Cattle top varied bill of stock and gear at Arizona National***

Visitors to the 1979 Arizona National Livestock Show at the State Fairgrounds in Phoenix the first week of the year saw a good deal more than one of America's top ten cattle shows.

The cattle were there, all right—championship quality breeding animals from all over the West in six breeds, including the big, meaty Simmentals for the first time, and 258 steers that went for an average of \$1.21 per pound at the feeder steer sale.

But other quadrupeds drew plenty of attention, too. In the brand-new Open Sheep Division of the Arizona National, more than 300 sheep were exhibited in nine classes. At the market lamb sale, animals brought an average of \$1.87 per pound.

Another new feature, the championship rodeo competition in the Turquoise Circuit Finals, gave the Arizona National the diversity boasted by other national livestock shows. Meanwhile, in two other arenas, horse shows continued day and night for all seven days of the Arizona National. Horse show entries were up 50 percent from last year.

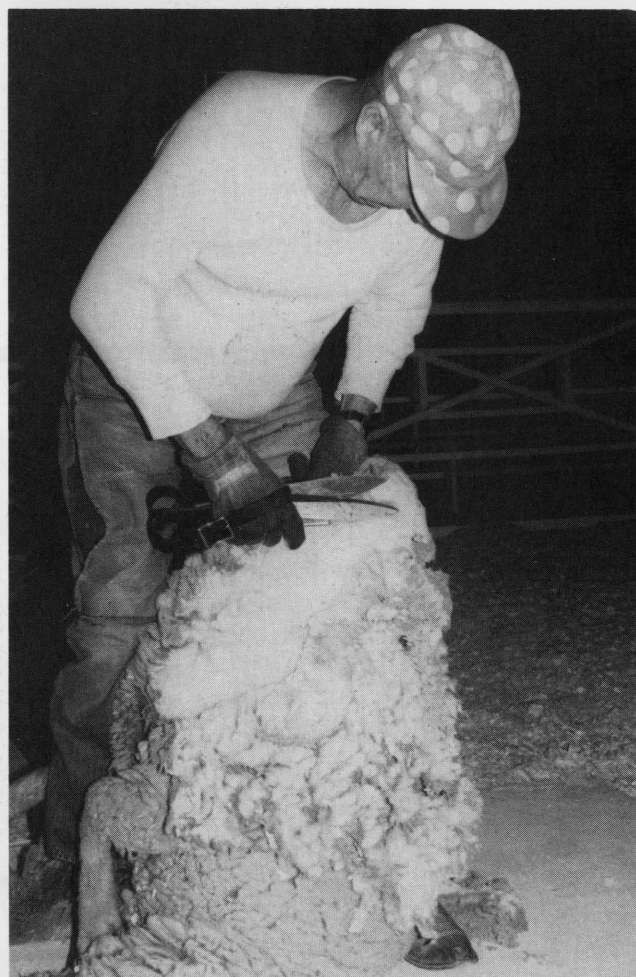
4-H and Future Farmers of America members had their own livestock judging contest, and also led tours of the whole show for more than 1700 Phoenix-area school children.

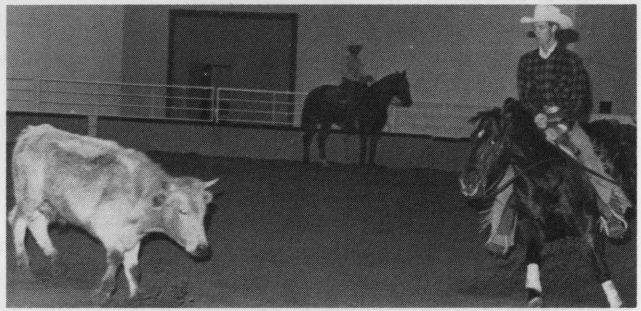
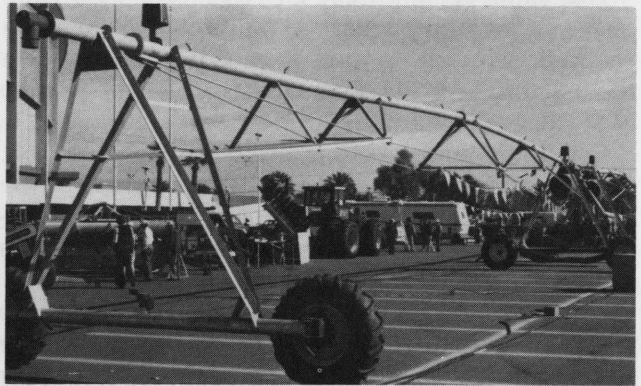
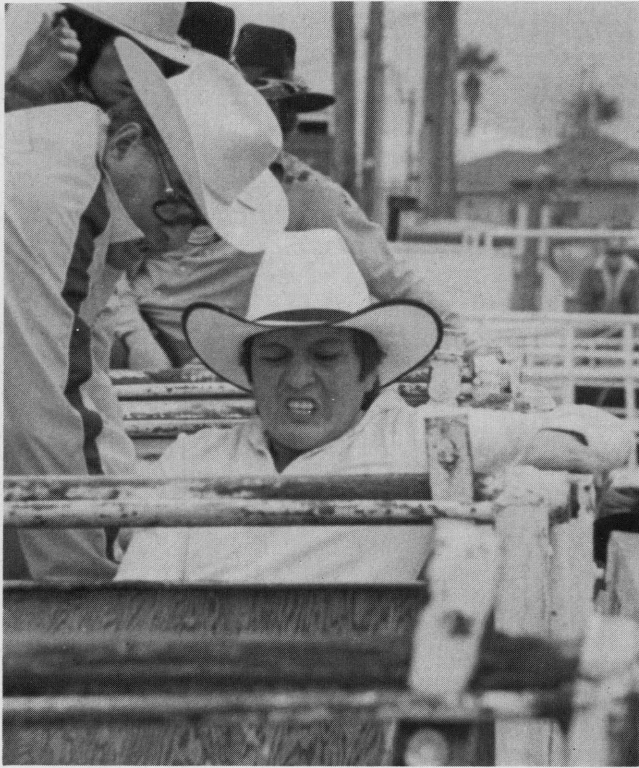
The Arizona Agricultural Trade Fair in connection with the Arizona National featured exhibits by more than 100 companies from 16 states. Tractors came in all sizes, and other machinery ranged from big spraying equipment and bale wagons to garden-size hand tillers and small woodstoves.

Despite all the added attractions, cattle are still the prime focus of the Arizona National. The Hereford show, selected by the American Hereford Association as a Register of Merit Hereford Show, was dedicated to E. Ray Cowden of rural Prescott for his lifetime of outstanding contributions to the Hereford breed and the cattle industry. The Missouri native settled near Phoenix in 1912, and began raising cattle there in 1926. He and his wife Ruth have run cattle ranches in four Arizona counties.

Extras with a bovine angle included 4-H calf scrambles, a cow chip toss and the Arizona State Cowbelle Beef Cook-off.

The stars of the show came under the categories of Hereford, Polled Hereford, Angus, Brangus, Charolais and Simmental.





## **Arizona National Livestock Show 1979**

